

FREE CONNECTIONS

At Metrolink, connecting you to your final destination reliably and safely is our goal. There are hundreds of connections you can make with your valid Metrolink ticket including the city bus, shuttle bus, light rail, and subway lines. By special arrangement with transit systems throughout Southern California, your Metrolink ticket takes you farther than ever before. Most connections are free with your valid Metrolink ticket.

SAME DAY TICKET: All Metrolink tickets must be stamped with today's date to be valid for boarding connecting transit (Monthly Passes must be for the current month).

LOCAL TRANSIT ONLY: Metrolink tickets are good for free rides on most local transit services only. An additional fare payment may be required for express or other non-local bus service.

SHOW TICKET: Just show your Metrolink ticket to the driver or attendant upon boarding your connecting transit service.

METROLINK



For discounts, tickets, schedules and more rider tips, visit metrolinktrains.com.



RIVERSIDE COUNTY'S QUICK GUIDE TO METROLINK



EXPLORING SOCAL HAS NEVER BEEN EASIER...

Safety is Our Number One Priority

Did you know the air on our trains is recirculated often through antimicrobial air filters that destroy 99.98% of viruses and bacteria? We go the extra mile...Our Clean Care Crew cleans and disinfects throughout the day and each train car has two hand sanitizer stations for your use.

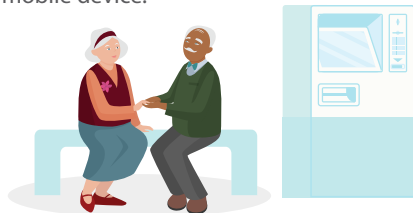
We do our part and ask you to do yours. **Masks are required on all platforms and trains.** Before you board, check train space for physical distancing by visiting **How Full is My Train?** on Metrolink's website.



EXPLORE ONBOARD METROLINK

1 Step 1: Find Your Station

Go to metrolinktrains.com to find your nearest station. Select your Origin and Destination station. You may also find your nearest station on Google and Apple maps on your mobile device.



2 Step 2: Check Your Train Schedule

All Metrolink lines run Monday through Friday, and Saturday and Sunday service is available on all lines except Riverside line. **Plan your trip on metrolinktrains.com** by selecting your origin and destination stations.



3 Step 3: Purchase Your Ticket

To save time, purchase your tickets via the Metrolink App available on the App Store or Google Play. You can also purchase one-way tickets online with Metrolink's online portal. For your convenience, ticket machines are available at all Metrolink stations. Check metrolinktrains.com for ticket types and to see if you qualify for a discounted fare.



SIGN UP FOR REWARDS!

Riding the train has its rewards with the **SoCal Explorer rewards program**. Buy a ticket, take a ride on Metrolink and earn points towards another. You'll also get discounts at local businesses like restaurants, coffee shops, hotels and more. It's easy and it's free and who doesn't enjoy perks?

4 Step 4: Go to the Station and Board the Train

Go to the station and board the train. All stations offer free parking, handicapped parking and ramps, and bike racks or lockers. Give yourself plenty of time to park and get to the station.



Head to the correct platform and be sure to stand safely behind the yellow line. When the doors open board the train and find a seat. **You are now on your way!**

