

Alarm device



- [Alarm Object](#)
- [Object Commands](#)
- [Adding Partitions](#)
- [Adding Sensors](#)
- [Bentel Interface](#)
- [Tecnoalarm Interface](#)
- [Siemens/Vanderbilt SPC](#)
- [Paradox Evo](#)
- [Inim Prime webAPI](#)

Alarm Object

This object is used to integrate the central alarm in the project; it allows the server to arm or disarm the central, to read partitions or sensor status and to singularly control them. All alarm panels integrated in the system provide the user with the same graphical effect; they can be selected from the following list of models:

- **Device type** This property allows to select the alarm panel model.
 - *ArrowHead Elit SX*
 - *AVS Electronics XTream 640*
 - *Bentel Absoluta*
 - *Bentel Kyo 320*
 - *Bentel Kyo Unit 8 Zones*
 - *Bentel Kyo Unit 16 Zones*
 - *Bentel Kyo Unit 32 Zones*
 - *Brahms series B4 CMP16*
 - *Brahms series B4 CMP32*
 - *Brahms series B4 CMP64*
 - *Elkron MP508 TG*
 - *Elmo (ETRx, ET8plus, NETx, Villegio, Pregio, Tacora)*
 - *GE security/Aritech ATS*
 - *GE security/Aritech ATS Adviser Master*
 - *Honeywell Galaxy Dimension*
 - *less (Genio)*
 - *Inim Prime webAPI*
 - *Inim Smartliving 10100*
 - *Inim Smartliving 1050*
 - *Inim Smartliving 515*
 - *Paradox EVO*
 - *Rokonet RP128*
 - *Rokonet RP128 BRTE*
 - *Satel Integra*
 - *Siemens SPC*
 - *Tecnoalarm TP16-256*
 - *Tecnoalarm TP20-440*
 - *Tecnoalarm TP8-64*
 - *Tecnoalarm TP8-88*
 - *Urmet 1067*
 - *Wago Switzerland*
- **Communication:** This property allows to select the type of communication established with the server; it can be selected from the following list:
 - *RS232:* Connected through serial cable.

- *RS232overTCP_IP*: Connected through link with TCP media converter.
- *TCP_IP*: Connected through network link.

If the property "Communication" is set to "RS232", the following properties will appear:

- **Serial Port**: Serial port number that changes depending on the server used. Click [here](#) to get the correct port number.

If the property "Communication" is set to "TCP/IP", the following properties will appear:

- **IP Address**: Device IP address or RS232overIP address.
- **Port Number**: TCP/IP port number for ethernet connection.
- **Partitions** Group of sensors that can be armed or disarmed together.
- **Max. partitions** Maximum number of partitions supported by the device.
- **Partitions reading** Time interval between two consecutive partitions state readings.
- **Sensors** List of all sensors connected to the alarm panel.
- **Max.sensors** Maximum number of sensors supported by the device.
- **Sensors reading** Time interval between two consecutive sensors state readings.
- **KNX reading** Enable/disable functions that allow to establish a KNX communication with central alarm system.

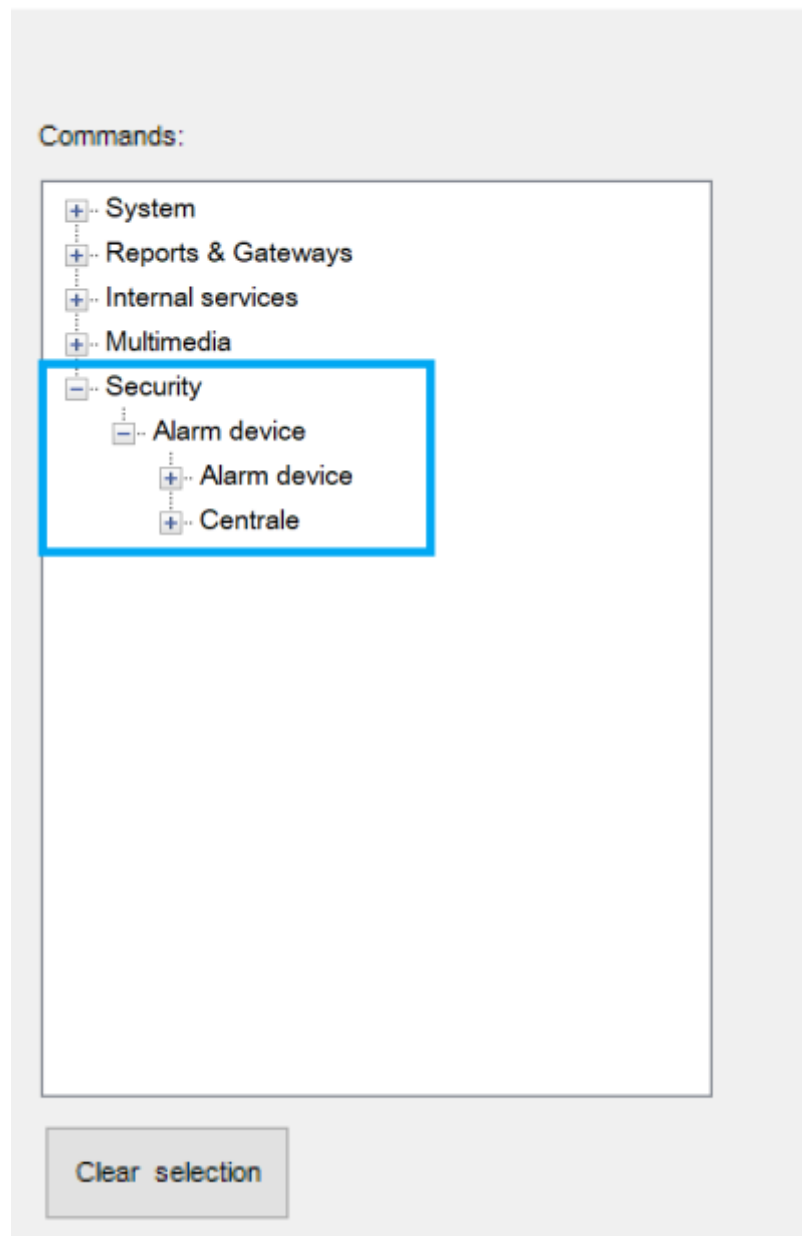
If in the property "Device Type" are selected "AVS Electronics XTream 640", "Bentel Absoluta", "Elkron MP508 TG", "Honeywell Galaxy Dimension", "Tecnoalarm TP16-256", "Tecnoalarm TP8-64", "Tecnoalarm TP8-88" the following property will appear:

- **Default code**: Enabled code for plant status quering.
If in the property "Device Type" is selected "AVS Electronics XTream 640" the following property will appear:
- **Use special functions**: Will enable the usage of AVS special way of arming a single partition (ON, HOME, AREA, PERIMETER). Can be applied only when using a single partition.
If in the property "Device Type" are selected "Elkron MP508 TG", "Urmet 1067" the following property will appear:
- **System code**: System code of the panel. Elkron default value is 55555555. Urmet default value is 99999999.
If in the property "Device Type" are selected "GE security/Aritech ATS", "Honeywell Galaxy Dimension" the following property will appear:
- **Force Arm**: Force Arm partition when arming.
If in the property "Device Type" is selected "GE security/Aritech ATS" the following property will appear:
- **Users**: List of security users associated to this control.
If in the property "Device Type" are selected "Tecnoalarm TP16-256", "Tecnoalarm TP8-64", "Tecnoalarm TP8-88", "Urmet 1067" the following property will appear:
- **Passphrase**: Encryption passphrase used during panel configuration.

Object Commands

After adding an alarm device to the system, it is possible to send a number of commands when using other objects such as the Generic Command button.

Command



After selecting **Security** from the tree, a list of all the alarm devices and centrale added in System will be shown. The available commands when selecting one of the devices are the following:

[Arm a particular partition with a specified code](#)

This command will allow to arm one partition using its related pin code.

- **Partition Number**
- **Pin Code**

[Disarm a particular partition with a specified code](#)

This command will allow to disarm one partition using its related pin code.

- **Partition Number**

- **Pin Code**

[Arm all partitions with a specified code](#)

This command will allow to arm all partition using a common pin code.

- **Pin Code**

[Disarm all partitions with a specified code](#)

This command will allow to disarm all partition using a common pin code.

- **Pin Code**

[Switch ON or OFF the specified output](#)

This command will allow to control a particular output on the alarm system.

- **Number of the output to switch**
- **New /state of the output** ON=1, OFF=0.

Centrale

After selecting **Security** from the tree, a list of all the alarm devices and centrale added in System will be shown. The available commands when selecting one of the devices are the following:

[Arm a particular partition with a specified code](#)

This command will allow to arm one partition using its related pin code.

- **Partition Number**
- **Pin Code**

[Disarm a particular partition with a specified code](#)

This command will allow to disarm one partition using its related pin code.

- **Partition Number**
- **Pin Code**

[Arm all partitions with a specified code](#)

This command will allow to arm all partition using a common pin code.

- **Pin Code**

[Disarm all partitions with a specified code](#)

This command will allow to disarm all partition using a common pin code.

- **Pin Code**

Switch ON or OFF the specified output

This command will allow to control a particular output on the alarm system.

- **Number of the output to switch**
- **New /state of the output** ON=1, OFF=0.

Adding partitions

Click on the button displayed on the right to open partitions editor window, click on "Add" and then adjust the properties in the grid:

- **Area Name** Label of text to identify the area.
- **Central index** Insert the number of the partition programmed in the security system.
- **Disarming** Enable/disable the option to deactivate the alarm system through a KNX command.
- **Arming** Enable/disable the option to activate the alarm system through a KNX command.
- **Command bit** KNX group address to command arming of the area (1 bit - 1=arm, 0=disarm)
- **Command Byte** KNX group address to command area in byte.
- **Command 14 Byte** KNX group address to command area in with 14 bytes object. The string should be in the form 1|xxxx or 0|xxxx where xxxx represents the user code and 0 or 1 is used to decide if the partition should be armed or disarmed.
- **Status byte** 1 byte KNX group address sent by the server containing the partition status.
- **Area name** Insert the partition name.

Adding sensors

Click on the button displayed on the right to open sensors editor window, click on "Add" and then adjust the properties in the grid:

- **Index number** Insert the number of the sensor you programmed in your security system.
- **Group** Insert a KNX group address to communicate with the sensor (f.e. to turn on a light using an alarm system motion sensor).
- **Name of the sensor** Sensor name.
- **Send all states** If enabled, the sensor sends all states, if disabled, the sensor sends only alarm state (only value 1).
- **Send on change** If enabled the sensor sends its state only on change (otherwise, sensor status will be sent on every polling).

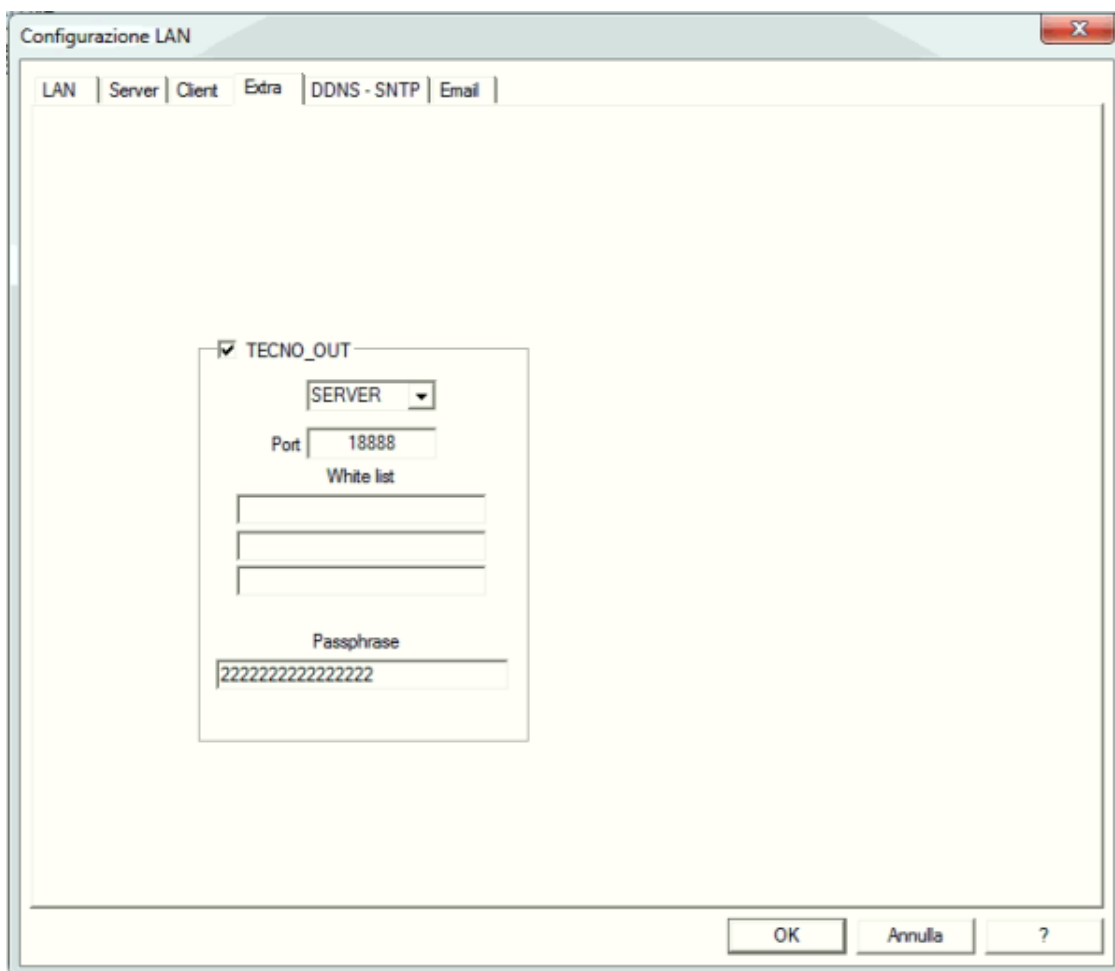
Bentel Interface

The system allows to manage Kyo8, Kyo16 and Kyo32 panels. Those panels can establish only a serial connection with ThinKnx system using a null-modem cable. Partitions, in ThinKnx, take numbers starting from 0 for the first one; sensors take numbers starting from 0 for the first one as well.

Tecnoalarm Interface

To interact with a TecnoAlarm device, the licence Tecnoout must be enabled on the alarm device following the manufacturer’s instructions. Furthermore, through the Centro software, the alarm device must be configured on the network as illustrated in following pictures.

In the “Extra” tab, check the box corresponding to “Tecnoout” and specify the correct port (10500 is recommended) and a password with 16 characters.



In the “LAN” tab, configure the network settings.

Configurazione LAN

LAN | Server | Client | Extra | DDNS - SNTP | Email

Abilitazione

IP address

Subnet mask

Gateway

DNS

ATTENZIONE : i parametri verranno inviati esclusivamente in prima programmazione ID=FFFF

OK Annulla ?

Configurazione LAN

LAN | Server | Client | Extra | DDNS - SNTP | Email

1

Port

Passphrase

White list

2

Port

Passphrase

White list

3

Port

Passphrase

White list

4

Port

Passphrase

White list

ATTENZIONE : i parametri verranno inviati esclusivamente in prima programmazione ID=FFFF

OK Annulla ?



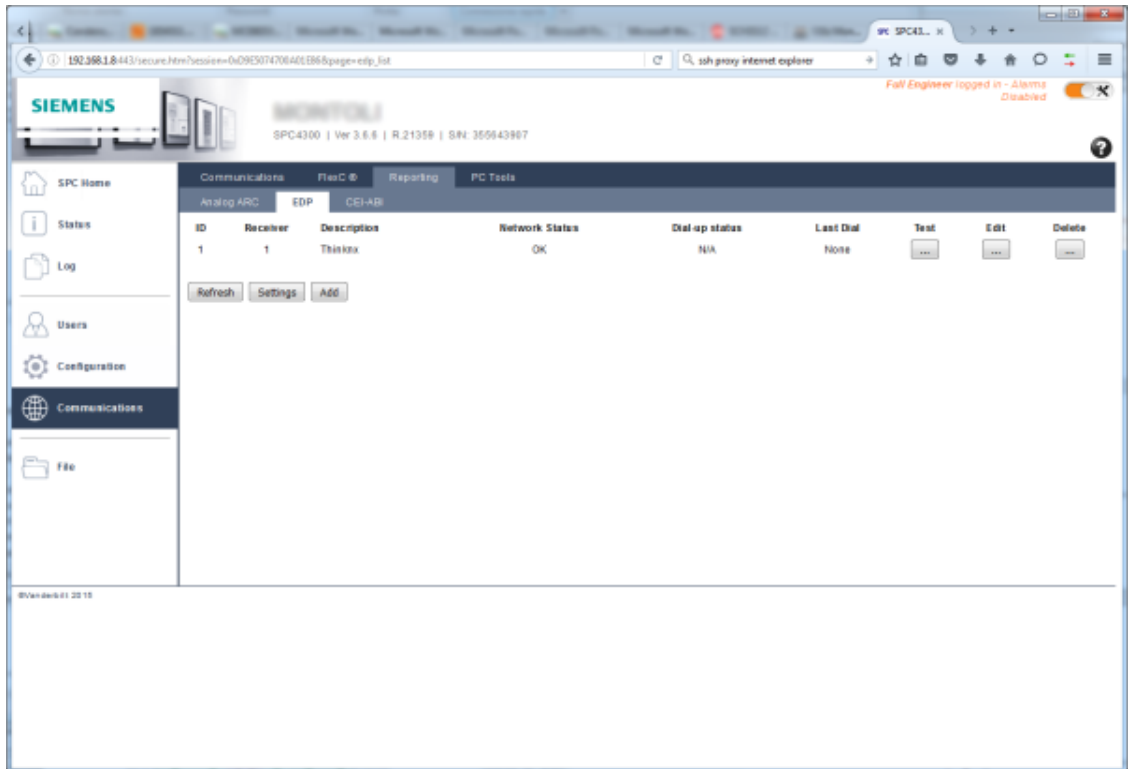
The port specified in the “Extra” tab must be different from those specified in the “Server” tab, even if ports specified in the “Server” tab are unchecked.

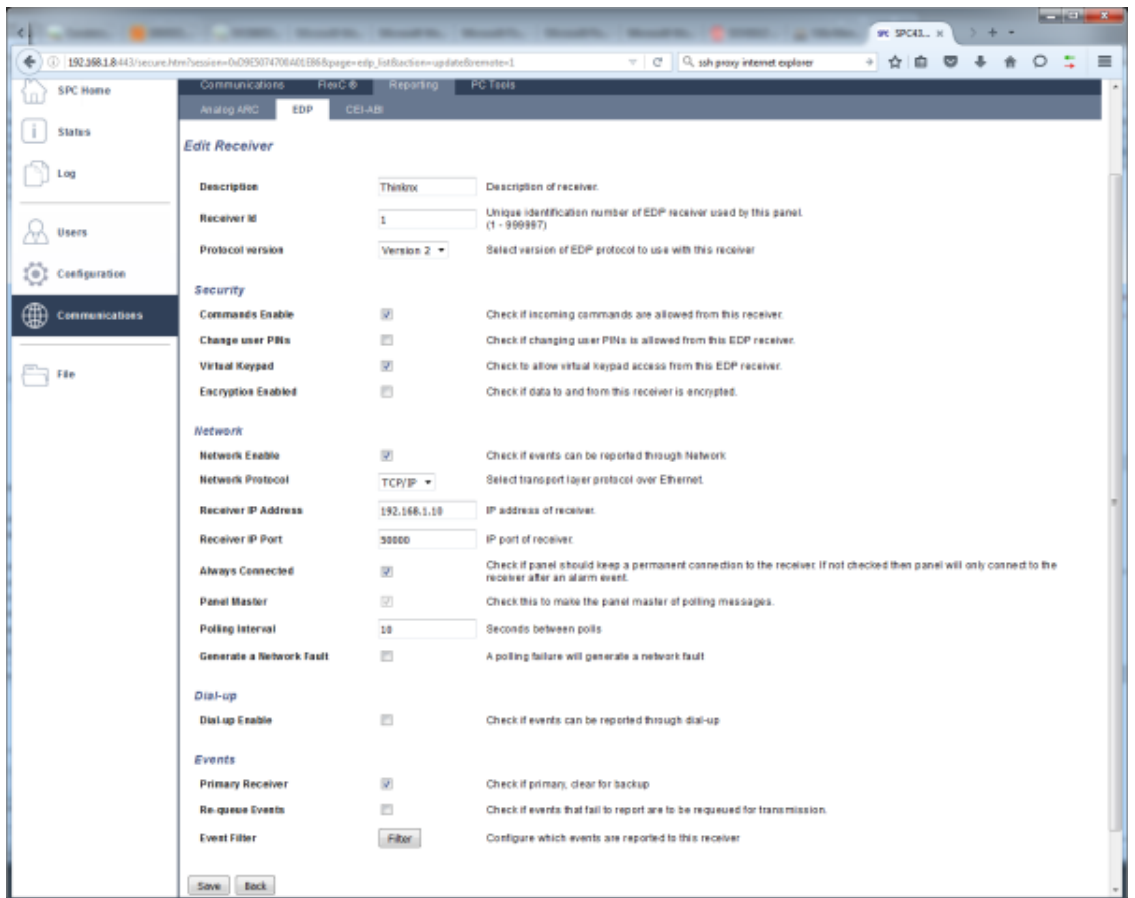
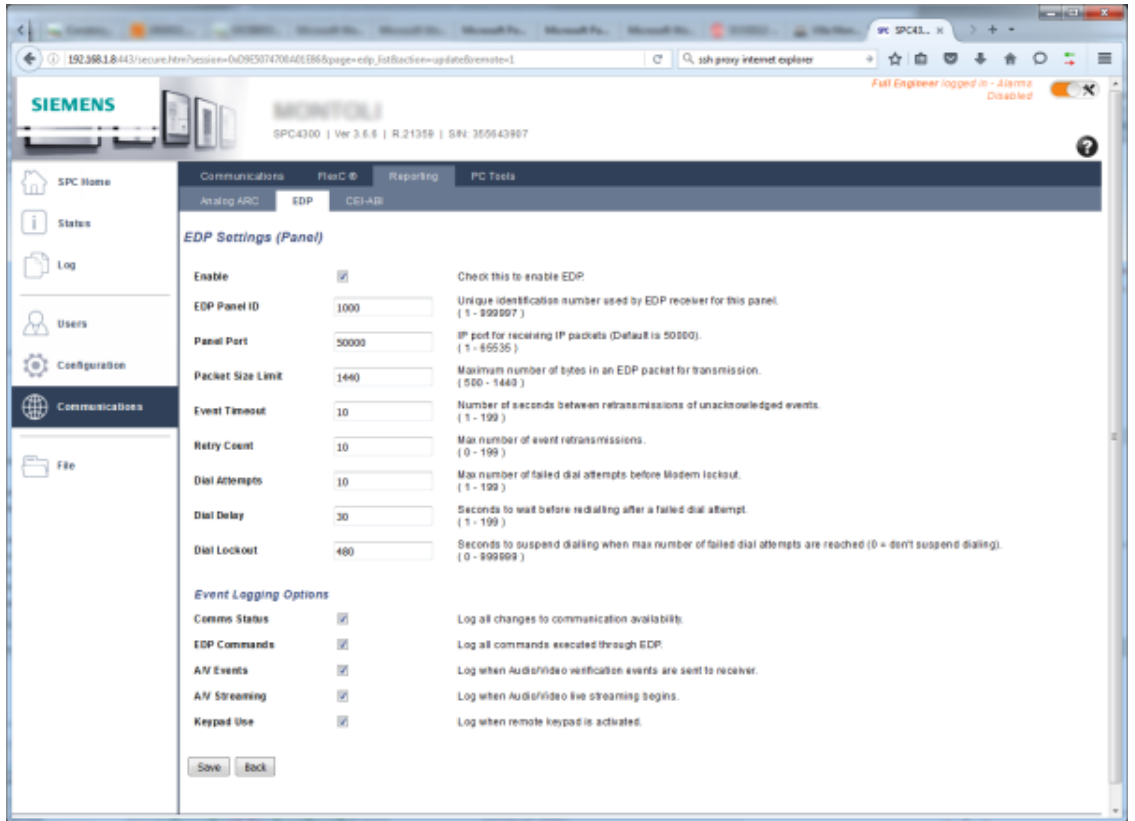


Parameters for alarm device can be set just during the first configuration. To change those values a complete reset of the device is needed.

Siemens/Vanderbilt SPC

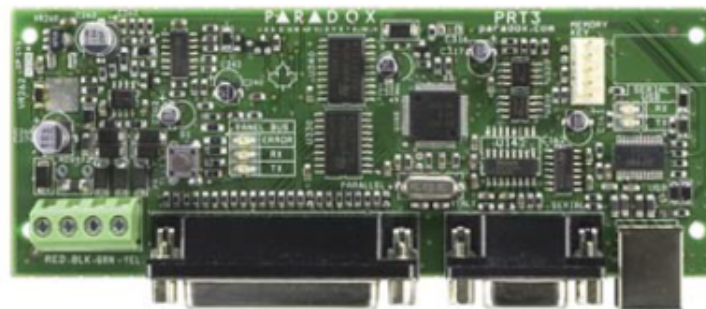
To interact with a Siemens SPC panels, please enable communications options from the Panel software as in the following screenshots (please change IP of thinknx server (in this case 192.168.1.10) according to your installation needs.





Paradox Evo

To interact with a Paradox Evo device, the Printer Module PRT3 must be used as an interface between the home automation system and the control panel.

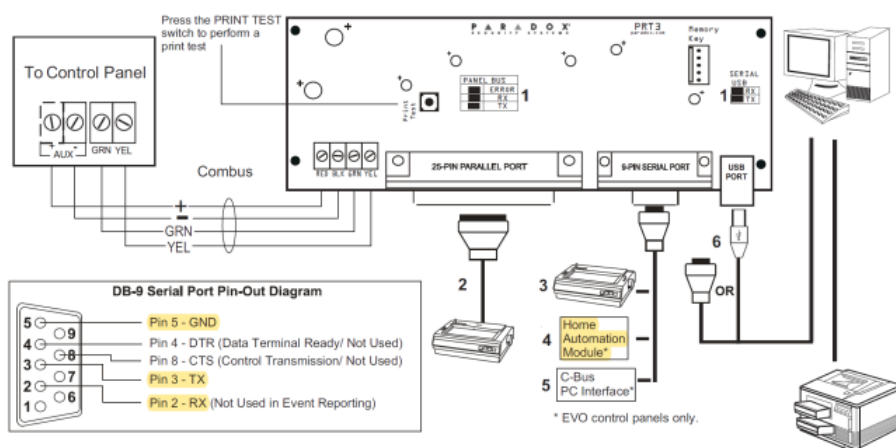
**Printer Module V1.2****PRT3****P ▲ R ▲ D O X[®]**
S E C U R I T Y S Y S T E M S

To ensure correct communication with the Thinknx server, the device must be configured as seen in the picture below:

- Set Baud Rate: 57600
- Set Printer Module's serial port to either "Event Reporting (off)" or "Home Automation (on)".

EVO Sections	Spectra Sections																			
[016]	[553]	<p>Enable Serial Port Option [1] The Printer Module can use the HyperTerminal® communication program that comes installed with Windows®. Using HyperTerminal®, the Printer Module will display events as they occur on your computer's monitor.</p> <ol style="list-style-type: none"> 1. Click Start (from the Windows® taskbar) ⇒ Programs ⇒ Accessories ⇒ Communications ⇒ HyperTerminal®. The Connection Description window is displayed. 2. Enter a name in the Name text box and select an icon for your connection file. Click OK. The Connect To window is displayed. 3. From the Connect Using drop-down list select the COM port connected to the Printer Module. Click OK. The COM Properties window is displayed. 4. Click on the Bits per second drop-down list and select the baud rate that is set in the Printer Module (Section [016] Options [2] & [3]). By default, HyperTerminal® sets the Data bits at 8, the Parity at None and the Stop bits at 1. Click OK. 5. The HyperTerminal® display will appear already connected to the Printer Module. Click on the Properties icon (or select Properties from the File menu). The communication file's Properties window is displayed. Click the Settings tab. Under Emulation, verify that it is set as Auto Detect. If not, select Auto Detect from the drop-down list. Click OK. 																		
[016]	[553]	<p>Baud Settings Option [2] [3] Both the Printer Module and serial port should have the same baud rate. Refer to the printer's instruction manual for the correct baud rate.</p> <table border="1" style="float: right;"> <thead> <tr> <th colspan="3">Baud Rate Settings</th> </tr> <tr> <th>[2]</th> <th>[3]</th> <th></th> </tr> </thead> <tbody> <tr> <td>OFF</td> <td>OFF</td> <td>— 2400 Baud</td> </tr> <tr> <td>ON</td> <td>OFF</td> <td>— 9600 Baud</td> </tr> <tr> <td>OFF</td> <td>ON</td> <td>— 19200 Baud</td> </tr> <tr> <td>ON</td> <td>ON</td> <td>— 57600 Baud</td> </tr> </tbody> </table>	Baud Rate Settings			[2]	[3]		OFF	OFF	— 2400 Baud	ON	OFF	— 9600 Baud	OFF	ON	— 19200 Baud	ON	ON	— 57600 Baud
Baud Rate Settings																				
[2]	[3]																			
OFF	OFF	— 2400 Baud																		
ON	OFF	— 9600 Baud																		
OFF	ON	— 19200 Baud																		
ON	ON	— 57600 Baud																		
[016]	N/A	<p>Serial Port Usage Option [4] Set the Printer Module's serial port usage to either Event Reporting (off) or Home Automation (on).</p> <p>Note: For information on using the Printer Module as an interface for a home automation system, refer to the <i>ASCII Protocol Programming Instructions</i> and/or <i>C-Bus Programming Instructions</i> available on our website at paradox.com.</p>																		

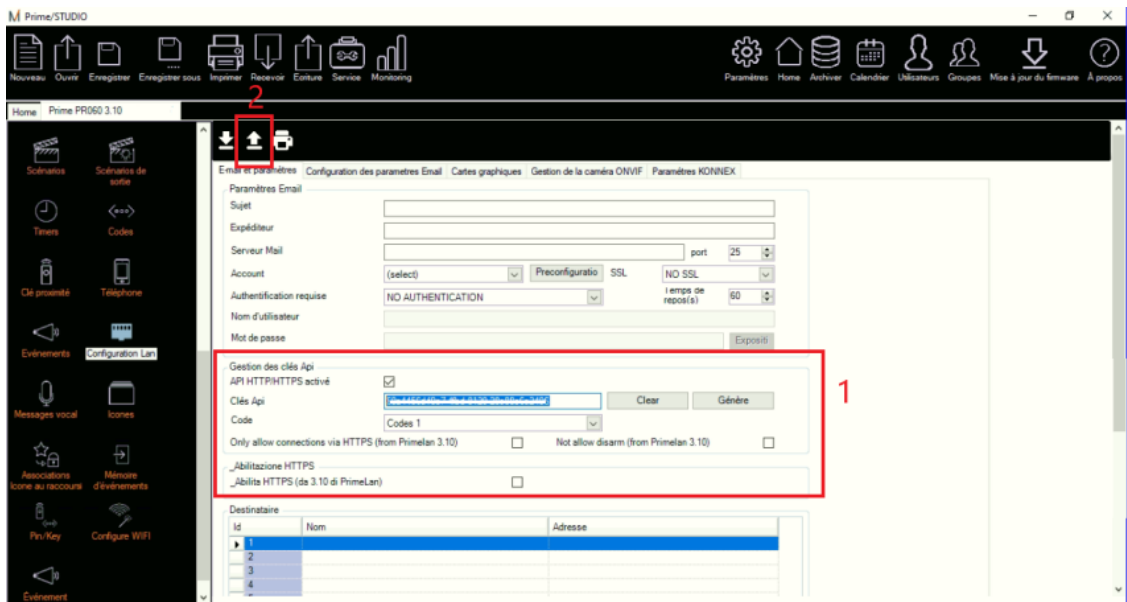
To properly connect the device to the Thinknx server, see below diagram:



1. See "LED Feedback" on page 1
2. 25-Pin Parallel Port: Connect the Printer Module's 25-pin parallel port to any dot matrix printer.
 Note: The dot matrix printer must support a minimum of 80 columns.
3. 9-Pin Serial Port: Connect the Printer Module's 9-Pin serial port to a dot matrix printer.
 Note: The dot matrix printer must support a minimum of 80 columns.
4. 9-pin Serial Port: Connect the Printer Module's 9-pin serial port to a home automation module.
5. 9-pin Serial Port: Connect C-Bus to the Printer Module using a **null modem cable**.
6. 9-pin Serial Port: Connect either the Printer Module's USB or 9-pin serial port to a computer's COM port to view the control panel's events on the computer's monitor. The events display on the monitor can then be printed through the printer connected to the computer.

Inim Prime webAPI

To interact with Inim Prim webAPI, it is necessary to generate an API key from the alarm's configuration page. The API key should be copied inside the Alarm object in the configurator. Make sure to save and reboot the alarm panel after generating the API key.



From: <https://www.thinknx.com/wiki/> - Learning Thinknx

Permanent link: https://www.thinknx.com/wiki/doku.php?id=alarm_device

Last update: 2023/02/27 13:57

